

<b>MODEL</b>	F20 Sorter	<b>VOLT/Hz</b>	<b>DATE OF MODIFICATION</b>	<b>SERIAL NO.</b>
<b>MODIFIED ARTICLE</b>	Parts Catalog			
<b>REASON OF MODIFICATION</b>				

Please correct your parts catalog as follows:

1) Part Number Corrections

Incorrect		Correct		Index No.	Page
P/N	Description	P/N	Description		
03140080W	Philips Pan Head Screw - M4x8	03130080W	Philips Pan Head Screw - M3x8	102	3-9
03140040W	Philips Pan Head Screw - M4x4	03130040W	Philips Pan Head Screw - M3x4	116	3-9
07110030W	Hexagon Nut - M3	07100030W	Hexagon Nut - M3	114	3-11
09604016W	Philips Flange Screw - M4x16	09514016W	Philips Screw With Flat Washer - M4x16	116	3-11
08074053	Spacer - 6.2x9.5x0.1mm	08074064	Washer - 6.2x9.5x0.2mm	117	3-11
11010408	Terminal - 4P	11010406	Terminal - 2P	127	3-13

2) Description Corrections

P/N	Incorrect Description	Correct Description	Index No.	Page
11010359	Terminal - 3P- (220/240V)	Terminal - 3P	126	3-13
11060101	Cord Stopper - 115V	Cord Stopper	129	3-13
11070413	Fuse - 3A (220V)	Fuse - 3A	108	3-23

3) Addition

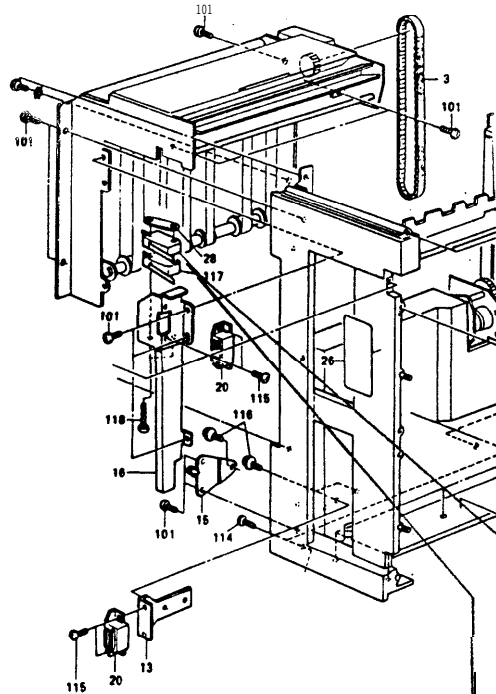
\* : New Index No. (See Figure)

P/N	Description	Q'ty	Index No.	Page
58874520	Insulating Sheet	2 (115V) 3 (220V)	*33	3-5

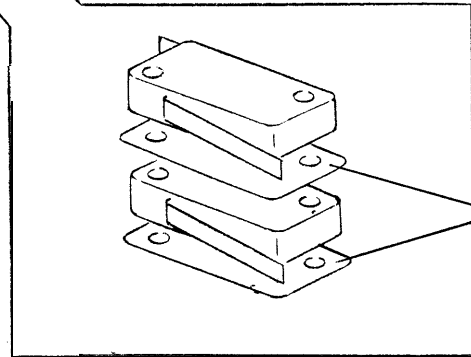
**DETAILS OF MODIFICATION**

**MANUAL PAGE**

1. EXTERIOR (Page 3-4)



The insulating sheets (#58874520) have not been listed on page 3-4, please add them accordingly.



#33 (Insulating Sheet)

  
M. Konno , Manager  
Technical Service Section

CONTROL NO.	BRAND	CODE	V / H Z	SERIAL NUMBER / MODEL CODE			
				F20 S o r t e r			
1	R I C O H	- 1 7	115/60	/			
	R I C O H	- 2 7	220/50				
MODEL NAME				C S 2 0 6 0			

M/B NO. : Plaster number of modification bulletin for this model.

CONTROL N().: Reference number of modification bulletin for your model.

MODEL	F20 Sorter	VOLT/Hz	DATE OF MODIFICATION	SERIAL NO.
MODIFIED ARTICLE	The ROM on the sorter main board			
REASON OF MODIFICATION	To enable second sorter operation			

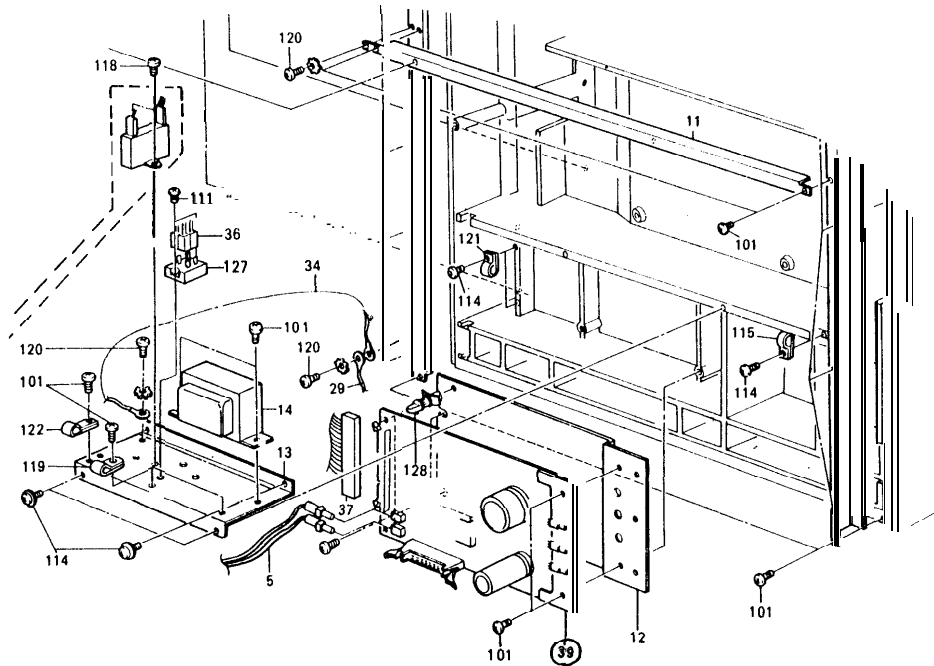
RAW. NO.	OLD PARTS NO.	NEW PARTS NO.	DESCRIPTION	A.B.C RANK	Q'TY USED OLD→NEW	INTER-CHANGE-ABILITY	PART NEEDED FOR REPLACEMENT BY NEW PART		PART CATALOG	
	PART NO.			DESCRIPTION	INDEX NO.		PAGE			
	59375611	59375612	Sorter Main P.C.B.		1 - 1	X / O			39	1 - 1 3
									*	1 - 2 3
	59375603		CPU - Main Control (HN482764G-3)						3	1 - 2 3
		59375613	IC - HN4827128G-25		1 - 1	X / O			3	1 - 2 3

- (1)  A : To replace new parts immediately.  
 B : To replace new parts at the time of repair.  
 C : To replace new parts at the time of overhaul.
- (2) When old and new parts are not mutually interchangeable, use additional parts or an assembly part indicated in "PARTS NEEDED FOR REPLACEMENT BY NEW PART" to install the new part.
- (3)  Left mark indicates whether old part can be used in new machine or not.  
 Right mark indicates whether new part can be used in old machine or not.

DETAILS OF MODIFICATION

MANUAL PAGE

5. DRIVE SECTION (Page 3-12)



Sorter main P. C.B.  
 #59375611 → 59375612

To enable second sorter operation, the ROM on the sorter main board has been changed from #59375603 to #59375613. Thus, the sorter main board has been changed from #59375611 to #59375612. As we informed separately, the suffix of the latest ROM (#59375613) is "B".

M. Konno, Manager  
 Technical Service Section

COITROL NO.	BRAND	CODE	v/H z	SERIAL NUMBER / MODEL CODE			
				F 2 0 S o r t e r			
2	R I C O H	- 1 7	11.5/60	1660800075			
	R I C O H	- 2 7	220/50	1660800036			
MODEL NAME				C S 2 0 6 0			

M/B NO. : Master number of modification bulletin for this model.

CONTROL NO.: Reference number of modification bulletin for your model.

<b>MODEL</b>	F20 Sorter	<b>VOLT/Hz</b>	<b>DATE OF MODIFICATION</b>	<b>SERIAL NO.</b>
<b>MODIFIED ARTICLE</b>	Belt Rollers			
<b>REASON OF MODIFICATION</b>	To reduce the possibility of the belt coming off when a paper misfeed occurs in the sorter			

DRAW. NO.	OLD PARTSNO.	NEW PARTS NO.	DESCRIPTION	A.B.C RANK	Q'TY USED OLD→NEW	INTER-CHANGE-ABILITY	PART NEEDED FOR REPLACEMENT BY NEW PART		PART CATALOG	
								PART NO.	DESCRIPTION	INDEX NO.
	59373121	59373131	Lower' Roller-Belt Drive		1 - 1	X / X			30	3 - 7
	58873231	59373231	Receiving Upper Guide		1 - 1	X / X			45	3 - 9
	59373135	59373136	Belt Tension Roller (entrance side)		1 - 1	X / O	* See below		15	3 - 7
			Belt Tension Roller (exit side)		1 - 1	O / O	* See below		15	3 - 7
Either the old or new roller can be used on the exit side, but the belt tension roller on the entrance side must be the new roller. (See attached pages for details)										

- (1)  A : To replace new parts immediately.  
 B : To replace new parts at the time of repair.  
 C : To replace new parts at the time of overhaul.
- (2) When old and new parts are not mutually interchangeable, use additional parts or an assembly part indicated in "PARTS NEEDED FOR REPLACEMENT BY NEW PART" to install the new part.
- (3)  Left mark indicates whether old part can be used in new machine or not.  
 Right mark indicates whether new part can be used in old machine or not.

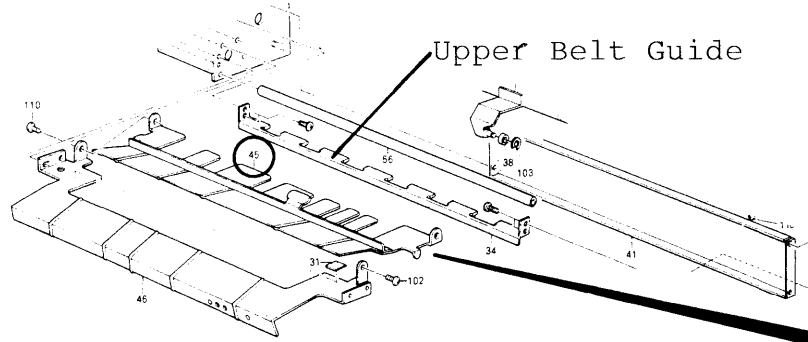




DETAILS OF MODIFICATION

MANUAL PAGE

3. TRANSPORT 2 (page 3-8)

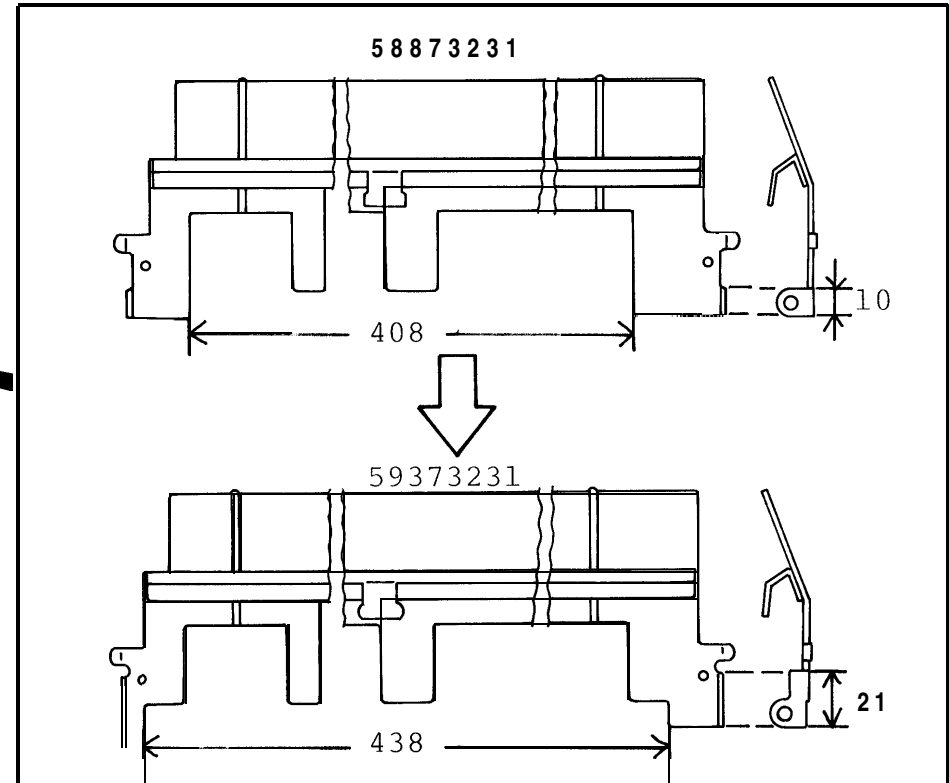


If paper misfeeds in the sorter, and the paper remains behind the upper transport belts, then the misfed paper should be removed by rotating the knob at the front of the lower belt drive roller. (Please refer to page 50 in the F20 operating instructions.) However, some of the customers remove the misfed paper without using the knob. Thus, the belt may sometimes come off the rollers (belt drive roller or belt tension roller).

To reduce the possibility of this problem, higher guides have been added to the rubber part of the belt tension roller marked 'entrance side' in the figure and the belt drive roller has been made wider. According to this modification, the receiving upper guide has also been changed.

To standardize with the modified belt tension roller, the other one marked 'exit side' in the figure has also been changed with an interchangeability of o/o.

Receiving Upper Guide



When you replace the old belt drive roller with the new one, the installation procedure of the upper belt guide will be changed.

Please refer to F20 RTB No.12.

M. Konno, Manager  
Overseas Service Department

CONTROL NO.	BRAND	CODE	V / H Z	SERIAL NUMBER / MODEL CODE			
				F20 S o r t e r			
3	R I C O H	- 1 7	115/60	1661001092			
	R I C O H	- 2 7	220/50	1661101445			
MODEL NAME				C S 2 0 6 0			

M/B **NO.** : Master number of modification bulletin for this model.

CONTROL NO. : Reference number of modification bulletin for your model.

<b>MODEL</b>	F20 Sorter	<b>VOLT/Hz</b>	<b>DATE OF MODIFICATION</b>	<b>SERIAL NO.</b>
<b>MODIFIED ARTICLE</b>	Photo Sensor			
<b>REASON OF MODIFICATION</b>	As per vendor change			

DRAW. NO.	OLD PARTS NO.	NEW PARTS NO.	DESCRIPTION	A.B.C RANK	Q'TY USED OLD→NEW	INTER-CHANGE-ABILITY	PART NEEDED FOR REPLACEMENT BY NEW PART		PART CATALOG	
								PART NO.	DESCRIPTION	INDEX NO.
	54425379	AW020002	Photo Sensor		2 - 2	○ / ○			3	3 - 9

- (1)  **A** : To replace new parts immediately.  
 **B** : To replace new parts at the time of repair.  
 **C** : To replace new parts at the time of overhaul,
- (2) When old and new parts are not mutually interchangeable, use additional parts or an assembly part indicated in "PARTS NEEDED FOR REPLACEMENT BY NEW PART" to install the new part.
- (3)  Left mark indicates whether old part can be used in new machine or not.  
 Right mark indicates whether new part can be used in old machine or not.

DETAILS OF MODIFICATION

MANUAL PAGE

3. TRANSPORT 2 (page 3-8)

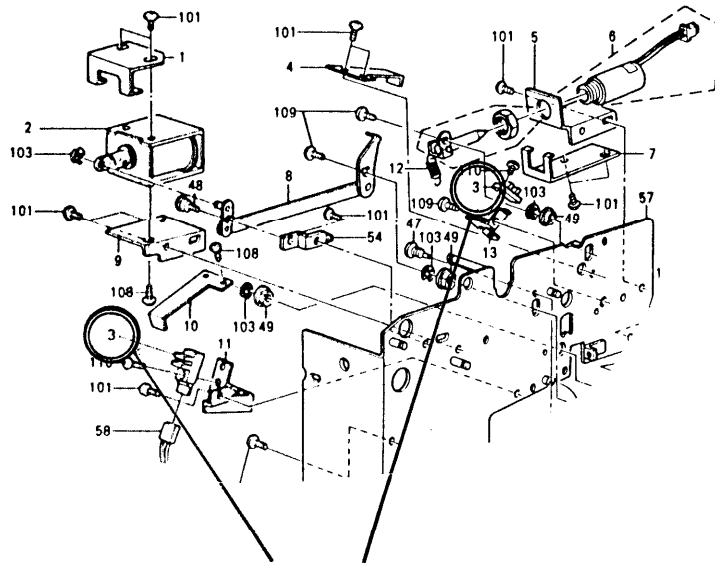


Photo Sensor

As per vendor change, the photo sensors have been modified from 54425379 to AW020002 with an interchangeability of 0/0 .

M. Konno , Manager  
Technical Service Section

CONTROL NO.	BRAND	CODE	V / H Z	SERIAL NUMBER / MODEL CODE			
				F20 S o r t e r			
4	R I C O H	- 1 7	115/60	/			
	R I C O H	- 2 7	220/50				
MODEL NAME				C S 2 0 6 0			

M/B NO. : Master number of modification bulletin for this model.

CONTROL NO.: Reference number of modification bulletin for your model.

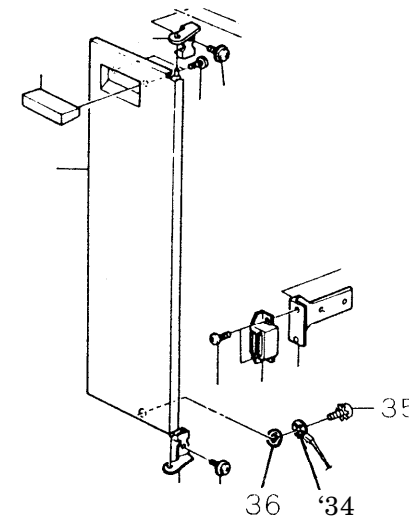
<b>MODEL</b>	F20 Sorter	<b>VOLT/Hz</b>	<b>DATE OF MODIFICATION</b>	<b>SERIAL NO.</b>
<b>MODIFIED ARTICLE</b>	Parts Catalog			
<b>REASON OF MODIFICATION</b>	Parts Catalog Correction			

Please correct your parts catalog as follows:

1) Addition

\* New Index No. (See Figure)

P/N	Description	Q'ty	Index No.	Page
58875782	Grounding Wire - Front Cover	1	*34	3-5
03140060M	Philips Pan Head Screw - M4x6	2	*35	3-5
07040040M	Toothed Washer - M4	2	*36	3-5



*Milburn J.*

CONTROL NO.	BRAND	CODE	V / H Z	SERIAL NUMBER / MODEL CODE			
				F20	Sorter		
5	R I C O H	- 1 7	115/60	/			
	R I C O H	- 2 7	220/50				
MODEL NAME				C S 2 0 6 0			

M/B NO. : Master number of modification bulletin for this model.

CONTROL NO.: Reference number of modification bulletin for your model.

<b>MODEL</b>	F20 Sorter (115V machine only)	<b>VOLT/Hz</b>	<b>DATE OF MODIFICATION</b>	<b>SERIAL NO.</b>
<b>MODIFIED ARTICLE</b>	Fuse			
<b>REASON OF MODIFICATION</b>	Parts standardization with other models			

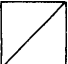
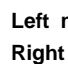
DRAW. NO.	OLD PARTS NO.	NEW PARTS NO.	DESCRIPTION	A.B.C RANK	Q'TY USED OLD→NEW	INTER-CHANGE-ABILITY	PART NEEDED FOR REPLACEMENT BY NEW PART		PART CATALOG	
								PART NO.	DESCRIPTION	INDEX NO.
	58875540	59375420	Fuse Holder - 115V			X / X			7	3-13
	11070369	11070413	Fuse - 3A (115V)			X / X			130	3-13
	11040269		Fuse Holder Case -115V			X / X		○ / ○ (As a Set)	131	3-13
		11040345	Fuse Holder Case			X / X			131	3-13
	59371151		Bracket - Power Supply Cord - 115V			X / X			6	3-13
		59371155	Bracket - Power Supply Cord			X / X			6	3-13

(1) **A** : To replace new parts immediately.

**B** : To replace new parts at the time of repair.

**C** : To replace new parts at the time of overhaul.

(2) When old and new parts are not mutually interchangeable, use additional parts or an assembly part indicated in " PARTS NEEDED FOR REPLACEMENT BY NEW PART" to install the new part.

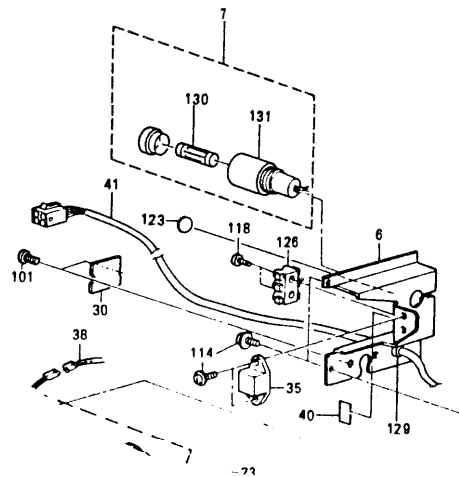
(3)  Left mark indicates whether old part can be used in new machine or not.  
 Right mark indicates whether new part can be used in old machine or not.



DETAILS OF MODIFICATION

MANUAL PAGE

5. DRIVE SECTION (Page 3-12)



To standardization with other models, the fuse holder case has been changed. This fuse holder case (#11040345) is to meet UL and CSA standards.

According to the above modification, the fuse, fuse holder and power supply cord bracket have been changed.

These new parts should be replaced as a set.

M . KONNO Manager

Overseas Service Department

CONTROL NO.	BRAND	CODE	V / H Z	SERIAL NUMBER / MODEL CODE			
				F 2 0 S o r t e r			
6	R I C O H	- 1 7	115/60	1661101145			
	R I C O H	- 2 7	220/50				
MODEL NAME				C S 2 0 6 0			

M/B NO. : Master number of modification bulletin for this model.

CONTROL NO.: Reference number of modification bulletin for your model.

<b>MODEL</b>	F20 Sorter	<b>VOLT/Hz</b>	<b>DATE OF MODIFICATION</b>	<b>SERIAL NO.</b>
<b>MODIFIED ARTICLE</b>	Ball Bearing			
<b>REASON OF MODIFICATION</b>	To ensure positive rotation of rollers			

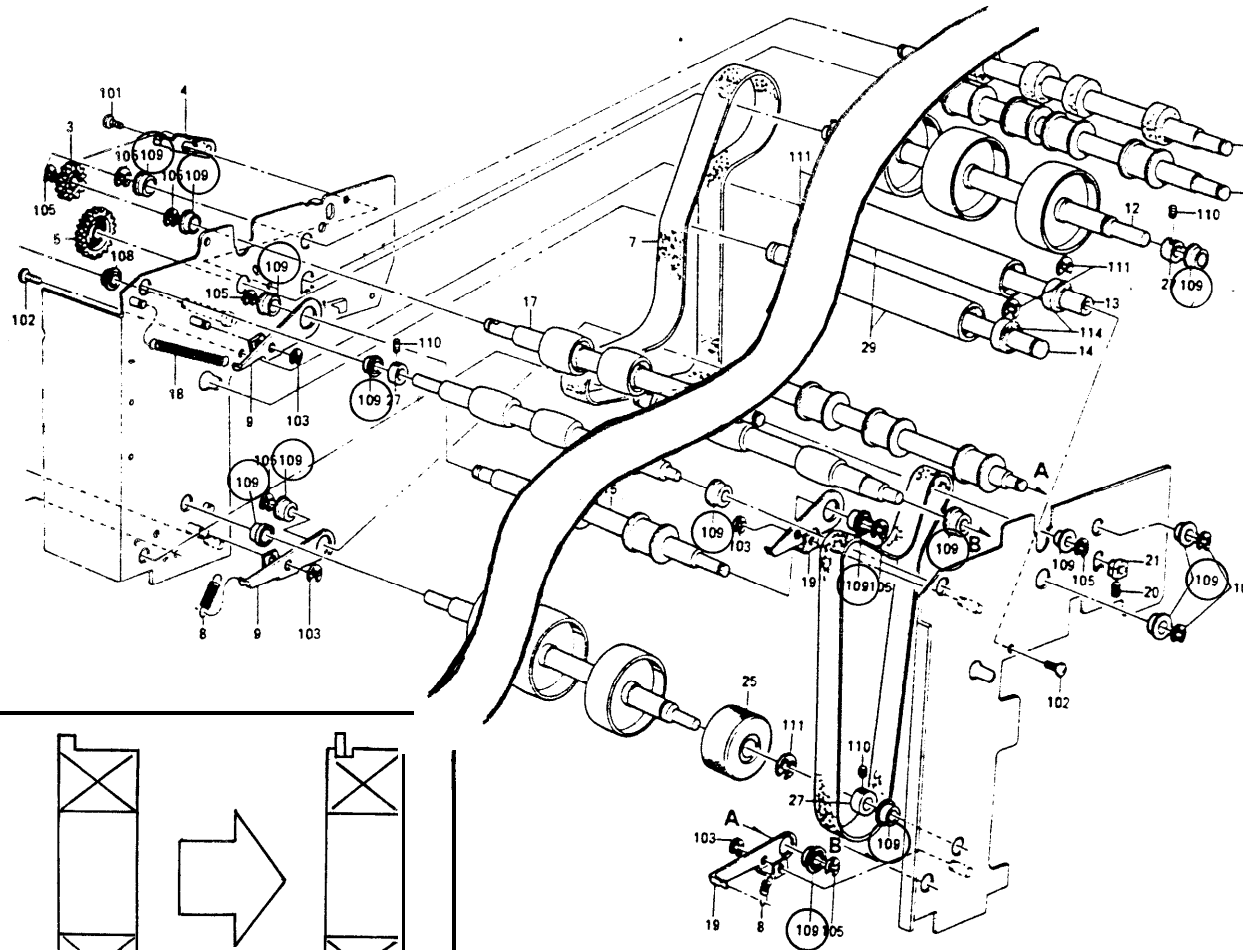
DRAW. NO.	OLD PARTSNO.	NEW PARTS NO.	DESCRIPTION	A.B.C RANK	Q'TY USED OLD→NEW	INTER-CHANGE-ABILITY	PART NEEDED FOR REPLACEMENT BY NEW PART		PART CATALOG	
							PART NO.	DESCRIPTION	INDEX NO.	PAGE
	08053039	08053291	Ball Bearing - 8x16x5mm		16-16	○ / ○			109	3-7

- (1)  **A** : To replace new parts immediately.  
 **B** : To replace new parts at the time of repair.  
 **C** : To replace new parts at the time of overhaul.
- (2) When old and new parts are not mutually interchangeable, use additional parts or an assembly part indicated in "PARTS NEEDED FOR REPLACEMENT BY NEW PART" to install the new part.
- (3)  Left mark indicates whether old part can be used in new machine or not.  
 Right mark indicates whether new part can be used in old machine or not.

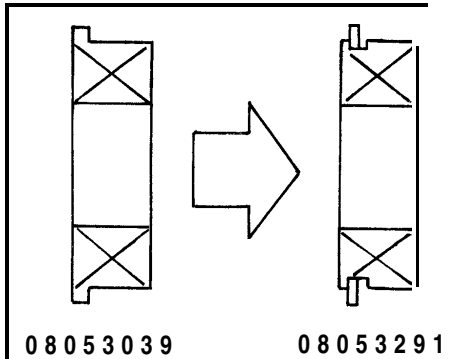
DETAILS OF IMODIFICATION

MANUAL PAGE

2. TRANSPORT 1 ( Page 3-6 )



To ensure positive rotation of rollers, the shape of the ball bearing has been changed as shown in the figure. The new ball bearings all should be replaced at the same time.



08053039

08053291

M. KONNO Manager  
Overseas Service Department

CONTROL NO.	BRAND	CODE	V / H Z	S E R I A L N U M B E R / M O D E L C O D E					
				F 2 0	S o r t e r				
7	R I C O H	- 1 7	115/60	/					
	R I C O H	- 2 7	220/50						
M O D E L N A M E				C	S	2	0	6	0

M/B NO. : Master number of modification bulletin for this model.

CONTROL NO.: Reference number of modification bulletin for your model.

RE-ISSUED ON Dec.15,1988  
 RE-ISSUED ON Nov.15,1987  
 ISSUED ON Sep.30,1987.

MODIFICATION BULLETIN NO. 8 page 1 of 4

<b>MODEL</b>	F20 Sorter	<b>VOLT/Hz</b>	<b>DATE OF MODIFICATION</b>	<b>SERIAL NO.</b>
<b>MODIFIED ARTICLE</b>	Magnetic Clutch			
<b>REASON OF MODIFICATION</b>	To increase a margin of magnetic clutch			

DRAW. NO.	OLD PARTSNO.	NEW PARTS NO.	DESCRIPTION	A.B.C RANK	Q'TY USED OLD→NEW	INTER-CHANGE-ABILITY	PARTNEEDED FOR REPLACEMENT BYNEWPART		PART CATALOG	
								PART NO.	DESCRIPTION	INDEX NO.
	58872160	59372160	Magnetic Clutch		1 - 1	X / X			23	3-13
	58872130		Clutch Idler Tension Tightener - Magnetic Clutch		1 - 0	X /			16	3-13
		59372130			0 - 1	/			16	3-13
		58861066	Tension Roller		0 - 1	/		New Index No. →	42	3-13
		07200040E	Retaining Ring - M4		+ 1	/ X			103	3-13
	58872140	59372140	Driving Shaft		1 - 1	X / X			26	3-13
	58872241	59372241	Support Plate - Timing Pulley		1 - 1	X / X			4	3--13
	58872245	59372245	Spring Anchor		1 - 1	X / X			3	3-13

(1)  A : To replace new parts immediately.

B : To replace new parts at the time of repair.

C : To replace new parts at the time of overhaul.

(2) When old and new parts are not mutually interchangeable, use additional parts or an assembly part indicated in "PARTS NEEDED FOR REPLACEMENT BY NEW PART" to install the new part.

(3)  Left mark indicates whether old part can be used in new machine or not.  
 Right mark indicates whether new part can be used in old machine or not.

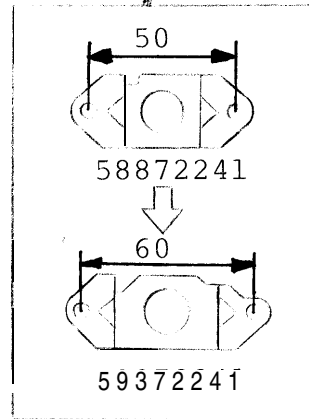
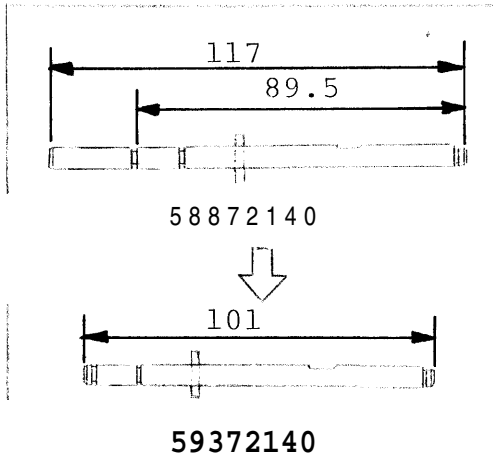
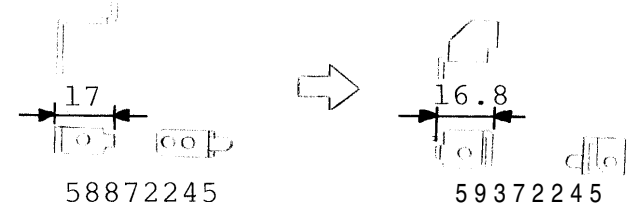
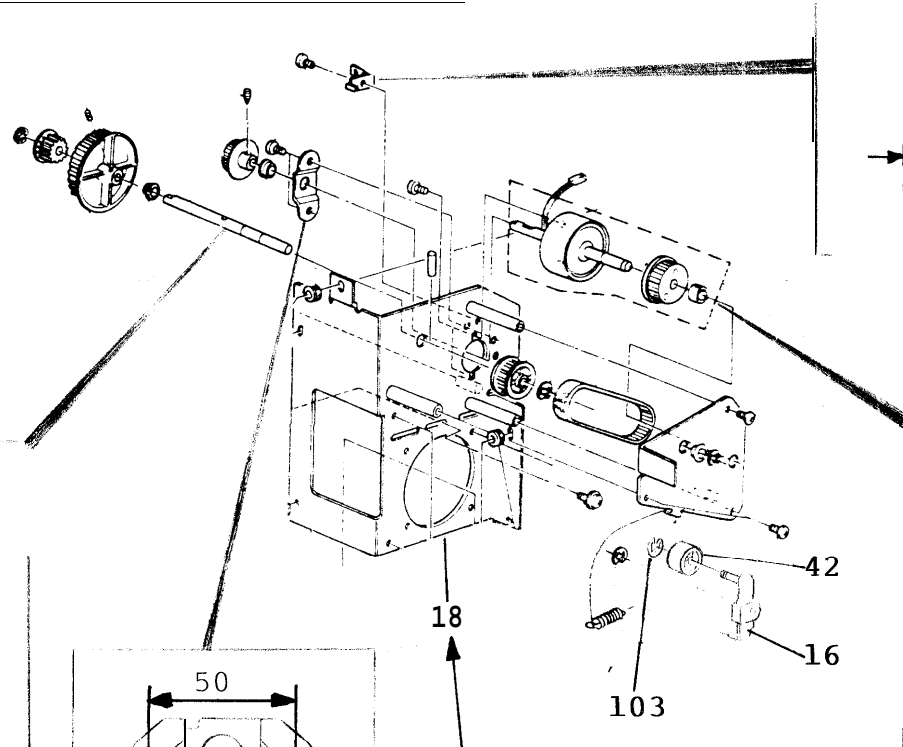
DETAILS OF MODIFICATION

5. DRIVE SECTION (Page 3-12)

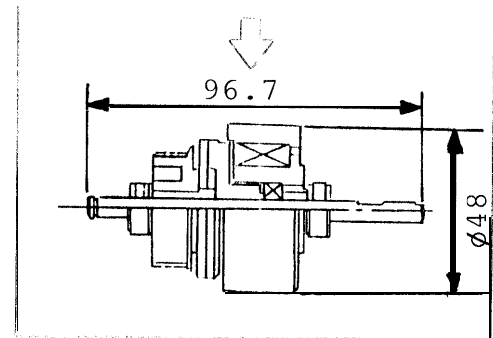
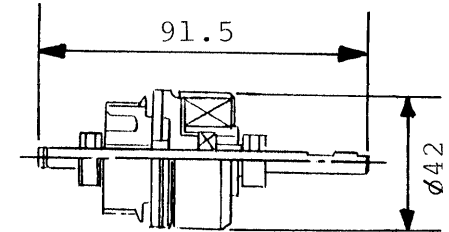
MANUAL PAGE

(NOTE)

The explanation for this modification is mentioned on the next page.



18  
 This part also should be replaced at the same time.



**DETAILS OF MODIFICATION**

**MANUALPAGE**

When oil of ball bearing adheres to the magnetic clutch, the stiction torque of the clutch sometimes comes to approximately 1/2 as compared with usual value and comes to less than the load of the clutch shaft. The result is that the clutch will slip.

To increase a margin of magnetic clutch, the magnetic clutch has been changed to a new one which has larger torque.

According to this modification, the shape of the clutch idler tension, driving shaft, support plate and spring anchor has been changed as shown in the figure.

The following part also has been modified. However, its part number has not been changed.

<u>PART NO.</u>	<u>DESCRIPTION</u>	<u>PARTS CATALOG</u>	
		<u>INDEX NO.</u>	<u>PAGE</u>
59372110	Driving Side Plate	18	3-13

The interchangeability code for all modified parts is X/O. Therefore, the new parts (including #59372110) should be replaced as a set.



M. KONNO , Manager  
Overseas Service Department



RE-ISSUED ON Dec.15,1988  
 RE-ISSUED ON Nov. 15, 1987  
ISSUED ON Sep.30 ,1987

MODIFICATION BULLETIN No. 8 page 4 of 4

CONTROL NO.	BRAND	CODE	V / HZ	SERIAL NUMBER / MODEL CODE			
				F20	Sorter		
8	RICOH	- 1 7	115/60	1661201957	(See below)		
	RICOH	- 2 7	220/50	1661202165			
MODEL NAME				C	S	2	0 6 0

M/B NO. : Master number of modification bulletin for this model.

CONTROL NO. : Reference number of modification bulletin for your model.

( NOTE) The machines which have the following serial numbers are not modified.

1661202033	1661202043	1661202067	1661202074	1661202079
1661202034	1661202046	1661202070	1661202075	1661202080
1661202037	1661202054	1661202071	1661202076	1661202081
1661202038	1661202055	1661202072	1661202077	1661202082
1661202039	1661202056	1661202073	1661202078	1661202083

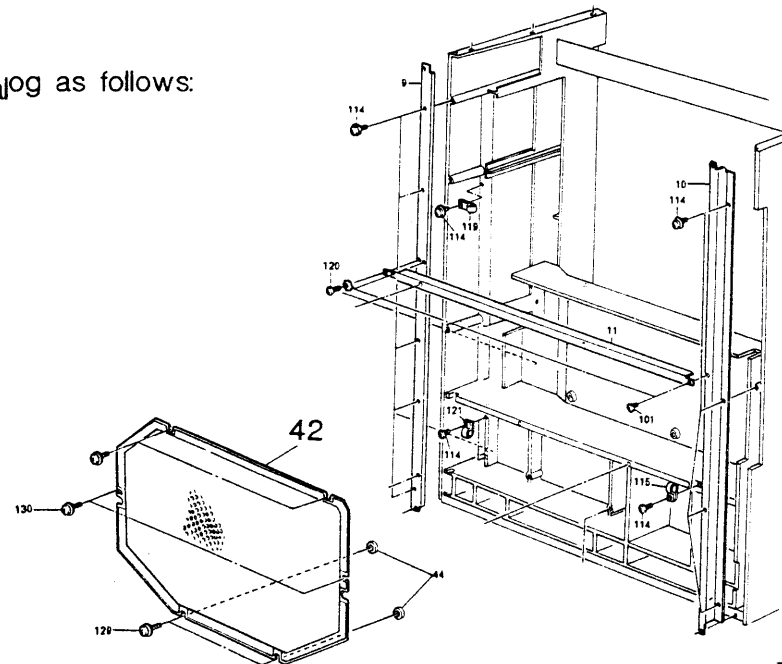
MODEL	F20 Sorter (115-volts Version Only)	VOLT/Hz	DATE OF MODIFICATION	SERIAL NO
MODIFIED ARTICLE	Parts Catalog			
REASON OF MODIFICATION	Parts Catalog Correction			

Please add the following part to your parts catalog:

Page	Index No.	Part Number	Description	Q'ty
3-13	42 (New Index)	#59374470	Cover - Main Control (115V)	1

Please add the illustration of the above cover to your parts catalog as follows:

5. DRIVE SECTION (Page 3-12)



*Trueman* Manager

CONTROL NO.	BRAND	CODE	v / Hz	SERIAL NUMBER / MODEL C O D E					
				F20	Sorter				
9	RICOH	-17	115/60	/					
	RICOH	-27	220/50						
MODEL NAME				C	S	2	0	6	0

M/BNO. : Master number of modification bulletin for this model.

CONTROL NO.: Reference number of modification bulletin for your model.

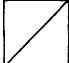

MODEL		F20 Sorter (European Version Only)					VOLT/Hz	DATE OF MODIFICATION	SERIAL NO.	
MODIFIED ARTICLE		Receiver Sensor Board								
REASON OF MODIFICATION		To meet safety standards (FEMKO)								
RAW. NO.	OLD PARTS NO.	NEW PARTS NO.	DESCRIPTION	A.B.C RANK	Q'TY USED OLD → NEW	INTER-CHANGEABILITY	PART NEEDED FOR REPLACEMENT BY NEW PART		PART CATALOG	
	PART NO.			DESCRIPTION			INDEX NO.	PAGE		
	58875623	59375632	Receiver Sensor Board		2 → 2	X / O			14	3 - 11
									*	3-19
		59375627	Rubber Tube		0 → 4			New Index →	67	3-11

(1) **A** : To replace new parts immediately.

**B** : To replace new parts at the time of repair.

**C** : To replace new parts at the time of overhaul.

(2) When old and new parts are not mutually interchangeable, use additional parts or an assembly part indicated in "PARTS NEEDED FOR REPLACEMENT BY NEW PART" to install the new part.

(3)  Left mark indicates whether old part can be used in new machine or not.  
 Right mark indicates whether new part can be used in old machine or not.

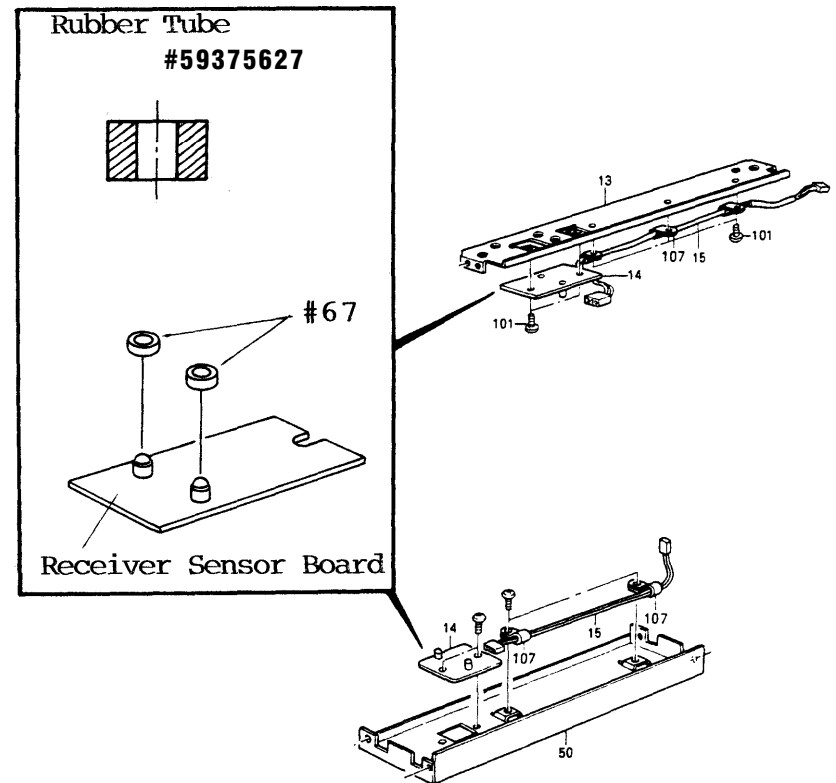
(4) Please file this BULLETIN between pages \_\_\_\_\_ and \_\_\_\_\_ of your service manual.


DETAILS OF MODIFICATION

MANUAL PAGE

To meet FEMKO standards, rubber tubes (#59375627) have been applied around the photosensors on the receiver sensor board.

4 Distribution (Page 3 - 10)



  
M. KONNO Manager  
Quality Assurance Department

CONTROL NO.	BRAND	CODE	V / H Z	SERIAL NUMBER / MODEL CODE			
				F20 Sorter			
10	RICOH	- 1 7	115/60				
	RICOH	- 2 7	220/50	1680308865			
MODEL NAME				CS 2 0 6 0			

M/B NO. : Master number of modification bulletin for this model.

CONTROL NO.: Reference number of modification bulletin for your model.

MODEL	F20 Sorter (220/240V versions only)	VOLT/Hz	DATE OF MODIFICATION	SERIAL NO
MODIFIED ARTICLE	Fuse Holder Case			
REASON OF MODIFICATION	As per part standardization			

As per part standardization, the fuse holder case for the 220/240V versions has been changed as follow: The interchangeability between the old and new parts is 0/0.

Page	Index No.	Old PIN	New PIN	Description
3-13	131	#11040345	#11040291	Fuse Holder Case - 220/240V

Please file this BULLETIN between pages                      and                      of your service manual.



Manager  
Quality Assurance Department

CONTROL NO.	BRAND	CODE	V / H Z	SERIAL NUMBER / MODEL CODE			
				F20	S	o	r
11	RICOH	- 1 7	115/60				
	RICOH	- 2 7	220/50				
MODEL NAME				C	S	2	0 6 0

M/B NO. : Master number of modification bulletin for this model.

CONTROL NO.: Reference number of modification bulletin for your model.

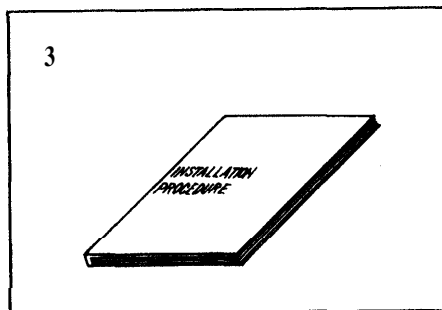


MODEL	F20 Sorter	VOLT/Hz	DATE OF MODIFICATION	SERIAL NO
MODIFIED ARTICLE	Parts Catalog			
REASON OF MODIFICATION	Parts Catalog Correction			

Please add the following part and illustration to your parts catalog:

Page	Index No.	Part Number	Description	Q'ty	
3-39	3 (New Index)	#59378721	Installation Procedure - English	1	(Ricoh version)
3-39	3 (New Index)	#59378722	Installation Procedure - Multi	1	(Ricoh version)
3-39	3 (New Index)	#59374850	Installation Procedure - English	1	(OEM version)

18. DECAL AND DOCUMENT (Page 3-38)



Please file this BULLETIN between pages and of your service manual.

*M. Konno*  
**M. Konno, Manager**  
 Quality Assurance Department

CONTROL NO.	BRAND	CODE	V / H Z	SERIAL NUMBER / MODEL CODE						
				F20	S	o	r	t	e	r
12	RICOH	- 1 7	115/60	/						
	RICOH	- 2 7	220/50							
MODEL NAME				C	S	2	0	6	0	

M/B NO. : Master number of modification bulletin for this model .

CONTROL NO.: Reference number of modification bulletin for your model.

MODEL	F20 Sorter (P.B., Savin and Nashua versions only)	VOLT/Hz	DATE OF MODIFICATION	SERIAL NO
MODIFIED ARTICLE	Installation Procedure			
REASON OF MODIFICATION	To facilitate part control			

As the **F21** production has started, the installation procedure for the F21 sorter has been added to the installation procedure for the F20 sorter. The interchangeability between the old and new installation procedures is O/O.

The new installation procedure has been included in both accessory boxes of the F20 sorter and F21 sorter.

Please correct your parts catalogs as follows

Page	Index No.	Old P/N	New P/N	Description	Q'ty
3-39	3	#59374850 (See MB #12)	#59378724	Installation Procedure - English	1

Please file this BULLETIN between pages                      and                      of your service manual.

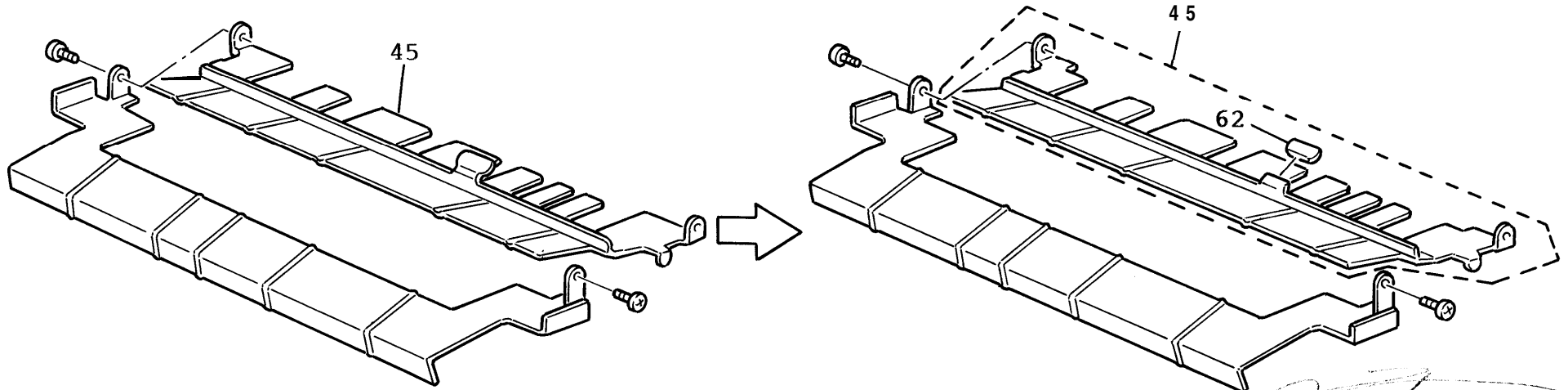
  
**M. Konno**, Manager  
 Quality Assurance Department

MODEL	F20 Sorter	VOLT/Hz	DATE OF MODIFICATION	SERIAL NO
MODIFIED ARTICLE	Parts Catalog			
REASON OF MODIFICATION	Parts catalog correction			

Please correct your parts catalog as follows

Page	Index No.	Old P/N	New P/N	Description	Q'ty
3-9	45	*59373231	#59373230	Receiving Upper Guide	1
3-9	62 (New Index)		#67541242	Knob Cap	1

3. TRANSPORT 2 (Page 3-8)



Please file this BULLETIN between pages and of your service manual.

M. K. ... Manager  
Quality Assurance Department

CONTROL NO.	BRAND	CODE	V / HZ	SERIAL NUMBER / MODEL CODE					
				F20	Sorter				
13	RICOH	-17	115/60	/					
	RICOH	-27	220/50						
MODEL NAME				C	S	2	0	6	0

M/B NO. : Master number of modification bulletin for this model.

CONTROL NO. : Reference number of modification bulletin for your model.

MODEL		F20 Sorter (P. B. , Savin, Nashua version only)				VOLT/Hz	DATE OF MODIFICATION	SERIAL NO	
MODIFIED ARTICLE		Transport Belt Knob, Knob Cap, etc.							
REASON OF MODIFICATION		As per color standardization with F21							
DRAW. NO.	OLD PARTS NO.	NEW PARTS NO.	DESCRIPTION	Q'TY USED OLD→NEW	INTER-CHANGE-ABILITY	PARTS NEEDED FOR REPLACEMENT BY NEW PART		PART CATALOG	
						PART NO.	DESCRIPTION	INDEX NO.	PAGE
	59373178	A4623178	Transport Belt Knob	1 - 1	<input checked="" type="checkbox"/> / <input checked="" type="checkbox"/>			25	3-7
	58873306		Cap - Manual Feed Link	1 - 0	<input checked="" type="checkbox"/> / <input type="checkbox"/>			24	3-9
		A4623306	Manual Feed Link	0 - 1	<input type="checkbox"/> / <input checked="" type="checkbox"/>			24	3-9
	59373230	A4623230	Receiving Upper Guide	1 - 1	<input checked="" type="checkbox"/> / <input checked="" type="checkbox"/>			45	3-9
	(See MB 14)				<input checked="" type="checkbox"/> / <input type="checkbox"/>				
	67541242	A4112531	Knob Cap	1 - 1	<input checked="" type="checkbox"/> / <input checked="" type="checkbox"/>			62	3-9
	(See MB 14)				<input checked="" type="checkbox"/> / <input type="checkbox"/>				
	59374351	A4624351	Driven Guide	2 - 2	<input checked="" type="checkbox"/> / <input checked="" type="checkbox"/>			53	3-11
	59374370	A4624370	Fixed Lever - Driven Unit	2 - 2	<input checked="" type="checkbox"/> / <input checked="" type="checkbox"/>			56	3-11

(1) **A** : To replace new parts immediately.

**B** : To replace new parts at the time of repair.

**C** : To replace new parts at the time of overhaul.

(2) When old and new parts are not mutually interchangeable, use additional parts or an assembly part indicated in "PARTS NEEDED FOR REPLACEMENT BY NEW PART" to install the new part.

(3)  Left mark indicates whether old part can be used in new machine or not.  
 Right mark indicates whether new part can be used in old machine or not.

(4) Please file this BULLETIN between pages \_\_\_\_\_ and \_\_\_\_\_ of your service manual.

DETAILS OF MODIFICATION

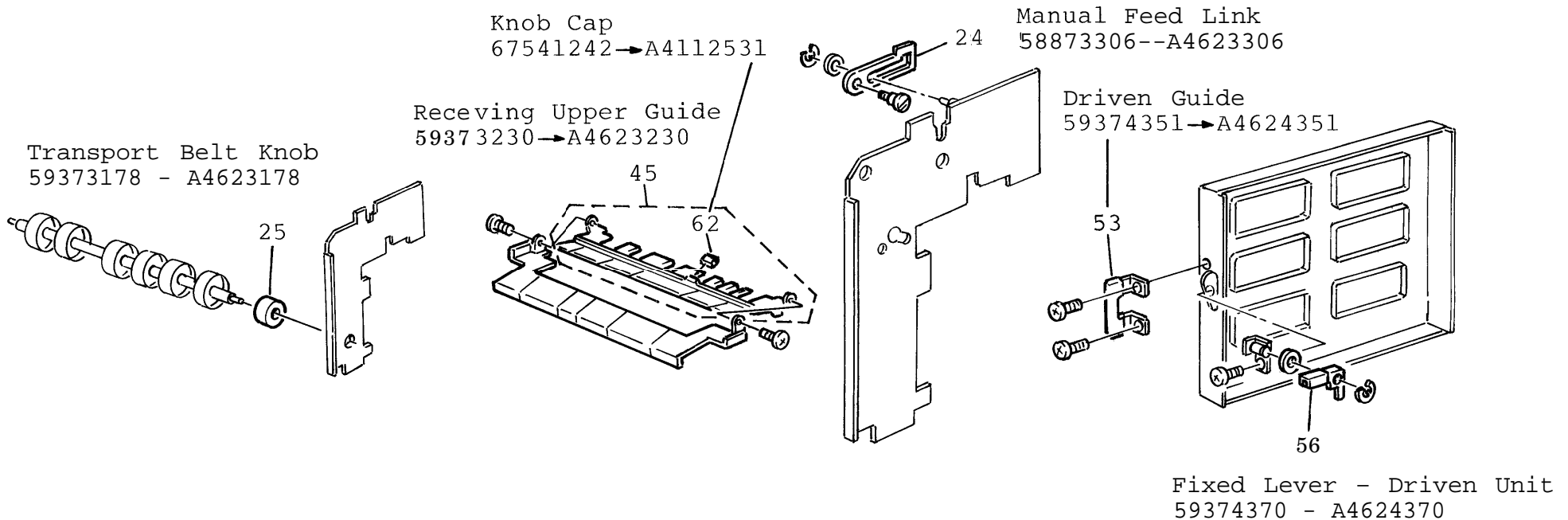
MANUAL PAGE

In the Pitney Bowes, Savin, and Nashua version machines, the sorter for the F20 will be commonly installed onto the F21. As per color standardization with the F21, the color of the parts listed Page 1 of this bulletin has been changed. The following show the locations of the parts catalog:

2. TRANSPORT 1 (Page 3-6)

3. TRANSPORT 2 (Page 3-8)

4. DISTRIBUTION (Page 3-10)



M. Konno, Manager  
Quality Assurance Department

MODEL	F20 Sorter (Nashua version only)	VOLT/Hz	DATE OF MODIFICATION	SERIAL NO.
MODIFIED ARTICLE	Covers			
REASON OF MODIFICATION	To meet TUV standards			

To meet TUV standards, the following parts have been changed with the interchangeability code x/o.

<u>Old P/N</u>	<u>New P/N</u>	<u>Description</u>	<u>Q'ty</u>	<u>Index No.</u>	<u>Page</u>
58871201	59371201	Upper Cover	1 - 1	2	3-5
58873381	59373381	Manual Feed Table - Nashua	1 - 0	4	3-5
		Manual Feed Table - A4 (NSA)	0 - 1	4	3-5
58871216	59371216	Rear Cover	1 - 1	5	3-5
58873291	59373291	Manual Feed Cover	1 - 1	22	3-9

  
**M. Konno**, Manager  
 Quality Assurance Department



<b>MODEL</b>	Sorter for F20	<b>VOLT/Hz</b>	<b>DATE OF MODIFICATION</b>	<b>SERIAL NO</b>
<b>MODIFIED ARTICLE</b>	Parts Catalog			
<b>REASON OF MODIFICATION</b>	Parts Catalog Correction			

Please correct the following part number in your parts catalog:

Page	Index No.	Incorrect P/N	Correct P/N	Description	Q'ty
3-13	10	#58871111	#58871109	Front Support Bracket	1

Please file this BULLETIN between pages \_\_\_\_\_ and \_\_\_\_\_ of your service manual.



M. Konno , Manager  
Quality Assurance Department

CONTROL NO.	BRAND	CODE	V / H Z	SERIAL NUMBER / MODEL C O D E			
				F 2 0	S o r t e r		
14	R I C O H	- 1 7	115/60	/			
	R I C O H	- 2 7	220/50				
MODEL NAME				C S 2 0 6 0			

M/B NO. : Master number of modification bulletin for this model.

CONTROL NO.: Reference number of modification bulletin for your model.

MODEL		Sorter for F20					VOLT/Hz	DATE OF MODIFICATION	SERIAL NO.		
MODIFIED ARTICLE		Transport Belt Roller									
REASON OF MODIFICATION		To prevent the transport belts from moving out of the transport rollers									
DRAW. NO.	OLD PARTSNO.		NEW PARTS NO.	DESCRIPTION	A.B.C RANK	Q'TY USED OLD→NEW	INTER-CHANGE-ABILITY	PART NEEDED FOR REPLACEMENT BY NEW PART		PART CATALOG	
									PART NO.	DESCRIPTION	INDEX NO.
	58873141	<input type="checkbox"/>		Transport Belt Roller		2 - 1	<input type="checkbox"/>			29	3-7
		<input checked="" type="checkbox"/>	A4623141	Transport Belt Roller		0 - 1	X O			*31	3-7
										*:New Index	

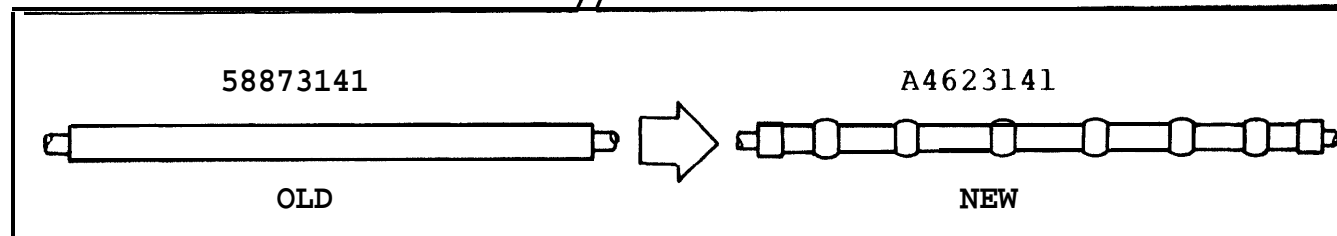
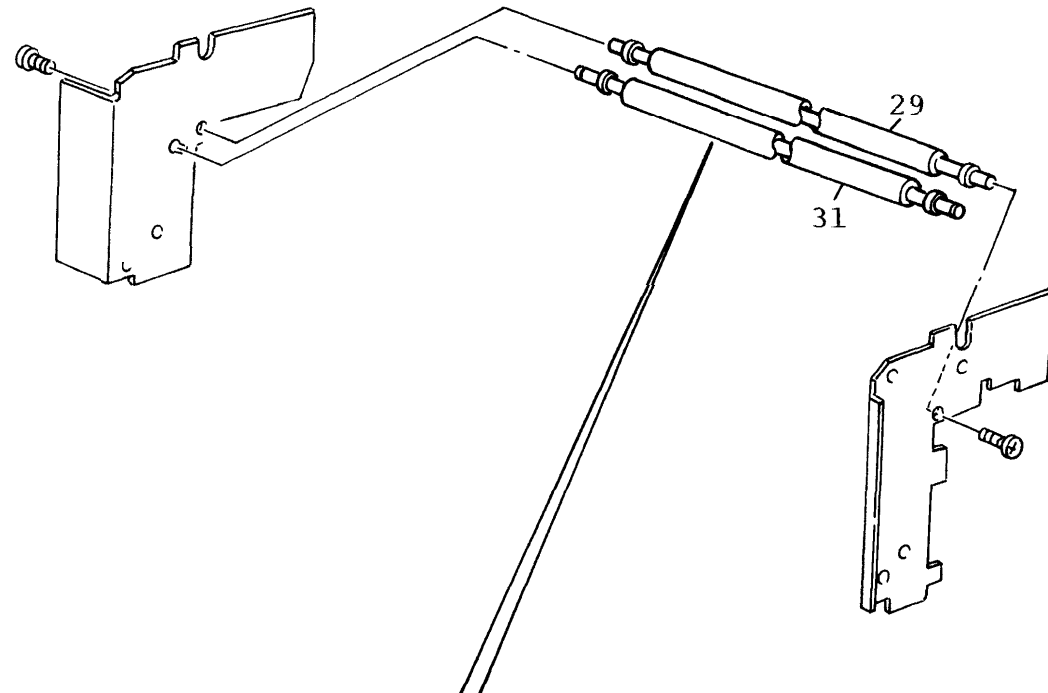
- (1)  A : To replace new parts immediately.  
 B : To replace new parts at the time of repair.  
 C : To replace new parts at the time of overhaul.
- (2) When old and new parts are not mutually interchangeable, use additional parts or an assembly part indicated in "PARTS NEEDED FOR REPLACEMENT BY NEW PART" to install the new part.
- (3)  Left mark indicates whether old part can be used in new machine or not.  
 Right mark indicates whether new part can be used in old machine or not.

**DETAILS OF MODIFICATION**

**MANUAL PAGE**

**2. TRANSPORT 1 (Page 3-6)**

To prevent the transport belts from moving out of their correct positions on the transport rollers, one of the transport belt rollers has been changed to the rounded type as shown in the illustration. As a result, when the transport belts start meandering, the new roller returns them to their correct positions.



*M. Konno*  
**M. Konno, Manager**  
 Quality Assurance Department

CONTROL" NO.	BRAND	CODE	V / HZ	SERIAL NUMBER / MODEL CODE			
				F20 S o r t e r			
15	R I C O H	- 1 7	115/60	16005 xxxxx			
	R I C O H	- 2 7	220/50	16005 xxxxx			
MODEL NAME				C S 2 0 6 0			

M/B NO. : Master number of modification bulletin for this model.

CONTROL NO. : Reference number of modification bulletin for your model.

<b>Model</b>	Sorter for F20, F21, F22 (NRG only)	<b>Volt/Hz</b>	<b>Date of Modification</b>	<b>Serial Number</b>
<b>Modified Article</b>	Exterior Covers			
<b>Reason for Modification</b>	The color of the exterior covers has been changed at NRG's request			

Old Parts No.	New Parts No.	Description	Interchangeability	Q'ty Used	Index No.	Page
58871205	59371205	Front Cover	X/X	1 → 1	18	5
58871221	59371221	Small Front Cover	X/X	1 → 1	19	5
54331290	59371290	Hand Grip	X/X	1 → 1	21	5
59371216	59371215	Rear Cover	X/X	1 → 1	5	5
58871247	59371247	Indicator Plate - Bin Number	X/X	1 → 1	11	5
59371201	19371202	Upper Cover	X/X	1 → 1	2	5
59373381	59373382	Manual Feed Table - A4	X/X	1 → 1	4	5
59373291	59373292	Manual Feed Cover	X/X	1 → 1	9	22

T. Ito, Manager  
Copier Technical Support

MODEL NAME	V/Hz	DESTINATION	CODE	SERIAL NUMBER
P.B. D820	115/60	USA	5937-11	
SAVIN FS65	115/60	USA	5937-15	
NRG S616	115/60	CANADA	5937-16	921080XXXX
RICOH CS2060	115/60	USA	5937-17	
NRG S616	220, 240/50	EUROPE, etc.	5937-25	9210700904
HCS 9060	220, 240/50	EUROPE	5937-26	
RICOH CS2060	220, 240/50	EUROPE, etc.	5937-27	

<b>Model</b>	Sorter for F20	<b>Volt/Hz</b>	<b>Date of Modification</b>	<b>Serial Number</b>
<b>Modified Article</b>	Magnet Catch			
<b>Reason for Modification</b>	Parts standardization			

Due to parts standardization, the following parts has been changed. The interchangeability is O/O.

Page	Index	Old P/N	New P/N	Description
5	20	50540536	AG070004	Magnet Catch Ass'y

T. Ito, Manager  
Copier Technical Support



MODEL NAME	V/Hz	DESTINATION	CODE	SERIAL NUMBER
P.B. D820	115/60	USA	5937-11	112XXXX
SAVIN FS65	115/60	USA	5937-15	94112XXXXX
NRG S616	115/60	CANADA	5937-16	921120XXXX
RICOH CS2060	115/60	USA	5937-17	SERVICE PARTS ONLY
NRG S616	220, 240/50	EUROPE, etc.	5937-25	921120XXXX
HCS 9060	220, 240/50	EUROPE	5937-26	340121XXXX
RICOH CS2060	220, 240/50	EUROPE, etc.	5937-27	SERVICE PARTS ONLY